

For details of intersection of
Spruce Hills Drive & 18TH ST. See
facing page.

TRANSFER PAGE 237L-1973

TRANSFER PAGE 6lds-216

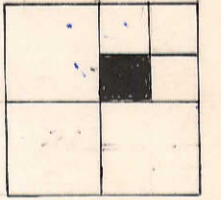
CUMBERLAND SQUARE SECOND ADDITION

LOT 1

CUMBERLAND SQUARE

LOT 1

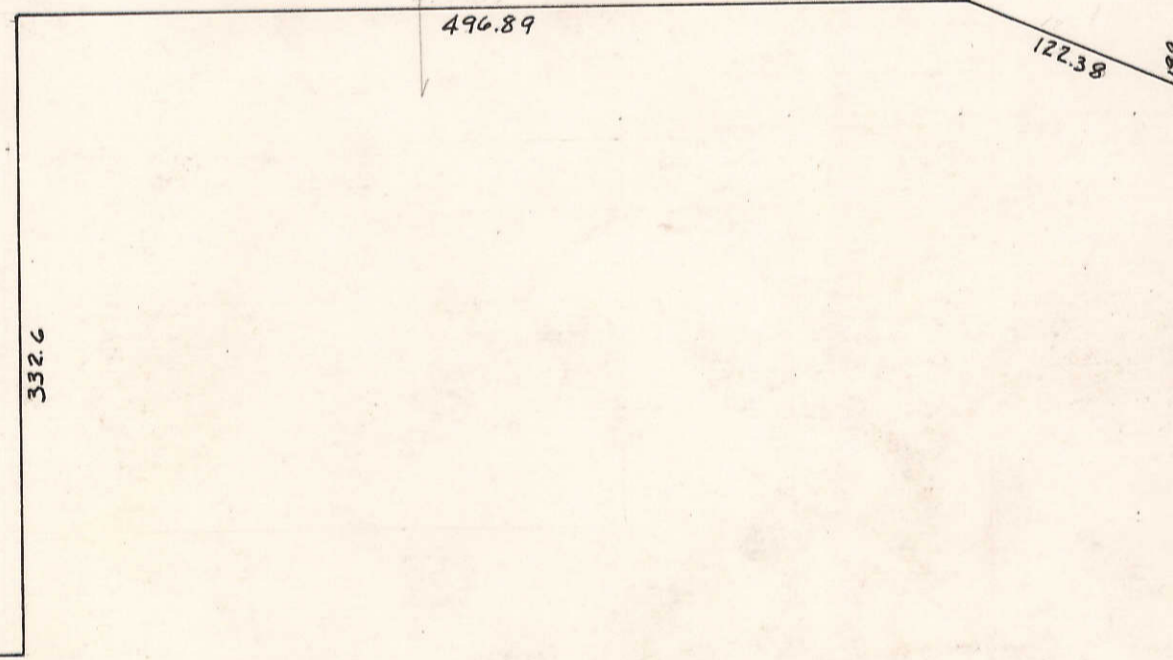
TRANSFER PAGE 237L-1874



W. line NE 1/4 SEC 21-78-4

19

5-13-64



Bettendorf Comm School District
4-12-67

Terry & Una
Bingham

2-25-92
4380-92

WENDY'S 1ST ADD.
TRANSFER PAGE 217L-1671

379.42

St Peters Episcopal Church
Bettendorf

9-3-76

AZTECA III

24395-06

LOT 2

CUMBERLAND SQUARE
PHASE II LC

179.61

KJTLJ

1-11-2005
839-05

Part of
Lot 1

1861.72 S.

1929.05 S.

23

ROAD

BETTENDORF LIFE-FITNESS CENTER
MIDDLE

Board of Park Comm.
Bettendorf, Iowa
7-24-64

KAIZEN CO. OF
AMERICA INC.
Mary ...

21

Center SEC 21-784

S. line NE 1/4 SEC 21-78-4

23RD ST.

37